

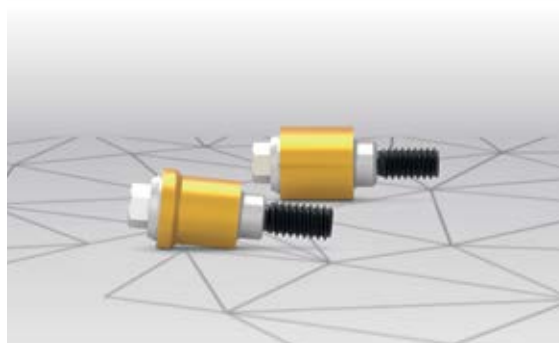
ABUTMENT MULTI-IM[®]

WITH NEW SURFACE
Ti GOLDEN



bti[®]

Human
Technology



NEW SURFACE

MULTI-IM® TRANSEPITHELIAL ABUTMENTS WITH THE NEW **Ti Golden SURFACE**

The MULTI-IM transepithelial abutments adopt the new Ti Golden surface treatment and also work with the new Ti Black screw, to guarantee the quality of the odontological work.

ADVANTAGES

GOLD FINISH

The golden colour of these prosthetic abutments with the Ti Golden layer achieves a better aesthetic, which is highly significant in transmitting a greater warmth to the gingival tissues.

AT GINGIVAL LEVEL

Abutments with the Ti Golden layer have a greater biocompatibility with the gingival fibroblasts than the Ti abutments without this layer.

For this reason the joint of the hemidesmosomes around the new prosthetic abutment is superior, improving the biological seal.

IMPROVES THE ANTIMICROBIAL PROPERTIES

The adhesion of static bacteria, with strains of *Staphylococcus aureus*, measured at 15 and 30 minutes proves that it is lower in prosthetic abutments with the Ti Golden layer compared to normal Ti abutments.

The bacterial colonisation decreases, therefore minimising the risk of peri-implantitis.

Ti BLACK SCREW

Preload and resistance to fatigue similar to those of gold and minimal likelihood of loosening .

Greater preload for the same torque.

Interna® connection



Straight

Expanded

Externa® connection



Straight

Expanded

Human
Technology

Thanks to the short height of the cones it allows us to solve angulation problems of up to 56 degrees...

... unlike other abutments on the market, whose maximum angulation would be limited to 15°.



Straight Design angulation: 0°

The diameter of the straight abutment will depend on the **implant platform**, yielding an emergence profile of **3.5 mm. for Narrow and 4.1 mm. for Universal and Universal Plus**, although in all these cases the prosthesis diameter will be 4.1 mm. As for the **wide platform**, both diameters will be 5.5 mm.

The height of the sleeve can be 0.5, 1, 2, 3, 4 and 5 mm.



PROSTHESIS DIAMETER

Ø 4,1 mm.
(Narrow, Universal and Universal Plus)

Ø 5,5 mm.
(Wide platform)



For all lines of BTI implants: Interna® and Externa®

MULTI-IM® transepithelial abutments are made from titanium and are available for the Interna and Externa connections.

Formed by two components, **the sleeve and retention screw**, which should be tightened to the implant head at a torque of 35 Ncm, with the LLMTP torque wrench. The screw that attaches the prosthesis to the abutment is tightened at a torque of 20 Ncm.

The prosthetic abutment to solve all kinds of angulation problems and to improve the gingival interphase

The use of the MULTI-IM® transepithelial abutment offers many **advantages**:

- Hermetic seal at the interface with the implant
- Easier to make impressions
- Preservation of biological seal by means of hemidesmosomes
- Easier passive adjustment
- Respects the biological space
- Allows you to resolve angles of up to 15°
- For work in CAD/CAM

This is the component of choice for immediate load and screw-retained multiple prosthesis.

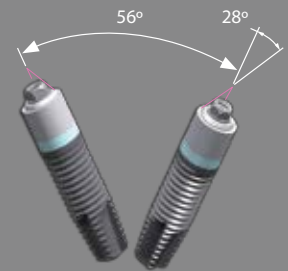
The latest work of BTI's R&D department demonstrates that the MULTI-IM achieves excellent hermetism between this component and the implant with 35 Ncm of torque, avoiding filtration and the accumulation of bacterial plaque.

Expanded Multi-IM®, for a wider prosthetic emergence

Make the transfer from the Universal platform (diameter 4.1 mm in the implant) to the Wide platform (diameter 5.5 mm prosthetic structure).

Indicated for posterior areas of the mandible which need a wider prosthetic emergence than the offered by a Universal platform and a better distribution of the bio-mechanical load.

Maximum angulation supported by a Multi-IM®



It allows a divergence between implants of up to 56°, making it easier to take impressions and screw the prosthesis with an excellent passive adjustment without the risk of stressing the implant or the prosthesis.



THE ANGULATIONS THAT ALLOW A DIRECT CONNECTION TO THE IMPLANT WILL ONLY BE 4°. LARGER ANGLES CAUSE FILTRATIONS IN THE INTERFACE DUE TO LACK OF HERMETISM.

TECHNICAL INDICATIONS

Prepared for multi-unit restorations or screw-retained bridges, for screw-retained ceramic prostheses, overdentures with bars, hybrid prosthesis. The abutment of choice for immediate load.

Universal range INTERNA® CONNECTION

STRAIGHT MULTI-IM® ABUTMENT

REF.	LENGTH
INTMIPU10	1 mm.
INTMIPU15	1.5 mm.
INTMIPU20	2 mm.
INTMIPU25	2.5 mm.
INTMIPU30	3 mm.
INTMIPU35	3.5 mm.
INTMIPU40	4 mm.



IMPORTANT:

The torque of this straight abutment must be **35 Ncm**.

TRANSEPIHELIAL MULTI-IM® EXPANDED

REF.	LENGTH
INTMIPUEX10	1 mm.
INTMIPUEX15	1.5 mm.
INTMIPUEX20	2 mm.
INTMIPUEX25	2.5 mm.
INTMIPUEX30	3 mm.
INTMIPUEX40	4 mm.



IMPORTANT:

This transepithelial is screwed on universal platform implants and is restored with the wide platform components.

You can find more information on transepithelial prostheses on our website www.bti-biotechnologyinstitute.com

PROSTHETIC
TOOLS

Multi-torque wrench

(LLMTP)
10 - 35 Ncm

Screws for the MULTI-IM® abutment

(TTMIR - Ti Black).
TTMI30



BTI Comercial

San Antonio, 15 · 5º
01005 Vitoria-Gasteiz
(Álava) · Espagne
Tél : +34 945 140 024
Fax : +34 945 135 203
pedidos@bticomercial.com

Filiales

GERMANY

Mannheimer Str. 17
75179 Pforzheim · Deutschland
Tel. +49 (0) 7231 428060
Fax +49 (0) 7231 4280615
info@bti-implant.de

FRANCE

6 Avenue Neil Armstrong
Immeuble Le Lindbergh
33692 Merignac CEDEX · France
Tel: (33) 06 45 07 36 78
info@bti-implant.fr

ITALY

Piazzale Piola, 1
20131 Milano · Italie
Tel: (39) 02 7060 5067
Fax: (39) 02 7063 9876
bti.italia@bti-implant.it

MEXICO

Ejército Nacional Mexicano 351, 3A
Col. Granada Delegación Miguel Hidalgo
Messico DF · CP 11520 · Mexico
Tel: (52) 55 52502964
Fax: (52) 55 55319327
bti.mexico@bti-implant.com

www.bti-biotechnologyinstitute.com

NOTE: consult your distributor for the availability of the product in the different markets.

B.T.I.

Biotechnology Institute S.L.

Parque Tecnológico de Álava
Leonardo da Vinci, 14
01510 Miñano (Álava) Espagne
bti.implantes@bti-implant.es

PORTUGAL

Praça Mouzinho de Albuquerque, 113, 5º
4100-359 Porto · Portugal
Tel: (351) 22 120 1373
Fax: (351) 22 120 1311
bti.portugal@bticomercial.com

UNITED KINGDOM

870 The Crescent
Colchester Business Park · Colchester
Essex CO49YQ · Reino Unido
Tel: (44) 01206580160
Fax: (44) 01206580161
info@bti-implant.co.uk

USA

1730 Walton Road
Suite 110
Blue Bell, PA 19422-1802 · USA
Tel: (1) 215 646 4067
Fax: (1) 215 646 4066
info@bti-implant.us

Distributors

CROATIA

Tel: 00385-1-58-013-02
bti@ortho-plan.com
www.ortho-plan.com

GREECE

Tel: 00302109248055
export@bti-implant.es

JAPAN

Tel: 81-(0)3-3833-3986
ueki@mu-trade.com

LITHUANIA

Tel. +370 5 2136648
Tel. +370 652 29991
info@mpdental.lt

ROMANIA

Tel:(40)769 059 900
office@dent-a-america2000.ro
www.dent-a-america2000.ro

RUSSIA

Tel. +7 499-640-83-64
s.krikorian@surgitech.ru
www.surgitech.ru

UKRAINE

Tel. +380 (73) 031 31 31
info@biotechmedical.com.ua
www.biotechmedical.com.ua

BELARUS

Tel.: (+8) 232 41 00 36
ulibka132@rambler.ru
www.smile132.by

COLOMBIA

Tel: +57 (316) 742-6872
viglesias@rocol.com.co
www.rocol.com.co

MORROCO

Tel.: +212 661 880 824
innovativedentalmaroc@gmail.com

TAIWAN

Tel.: +886-2-2647-9077
kevin_lin@smart-linkx.com.tw



BTI APP
NEW PRODUCTS

iPhone / smartphone version
iPad / Tablets version (Customer Area)